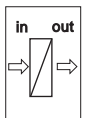
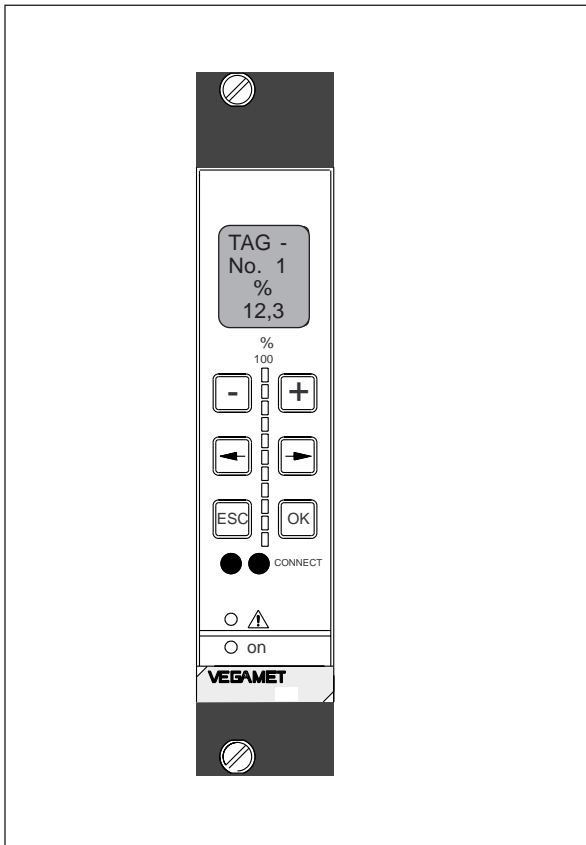
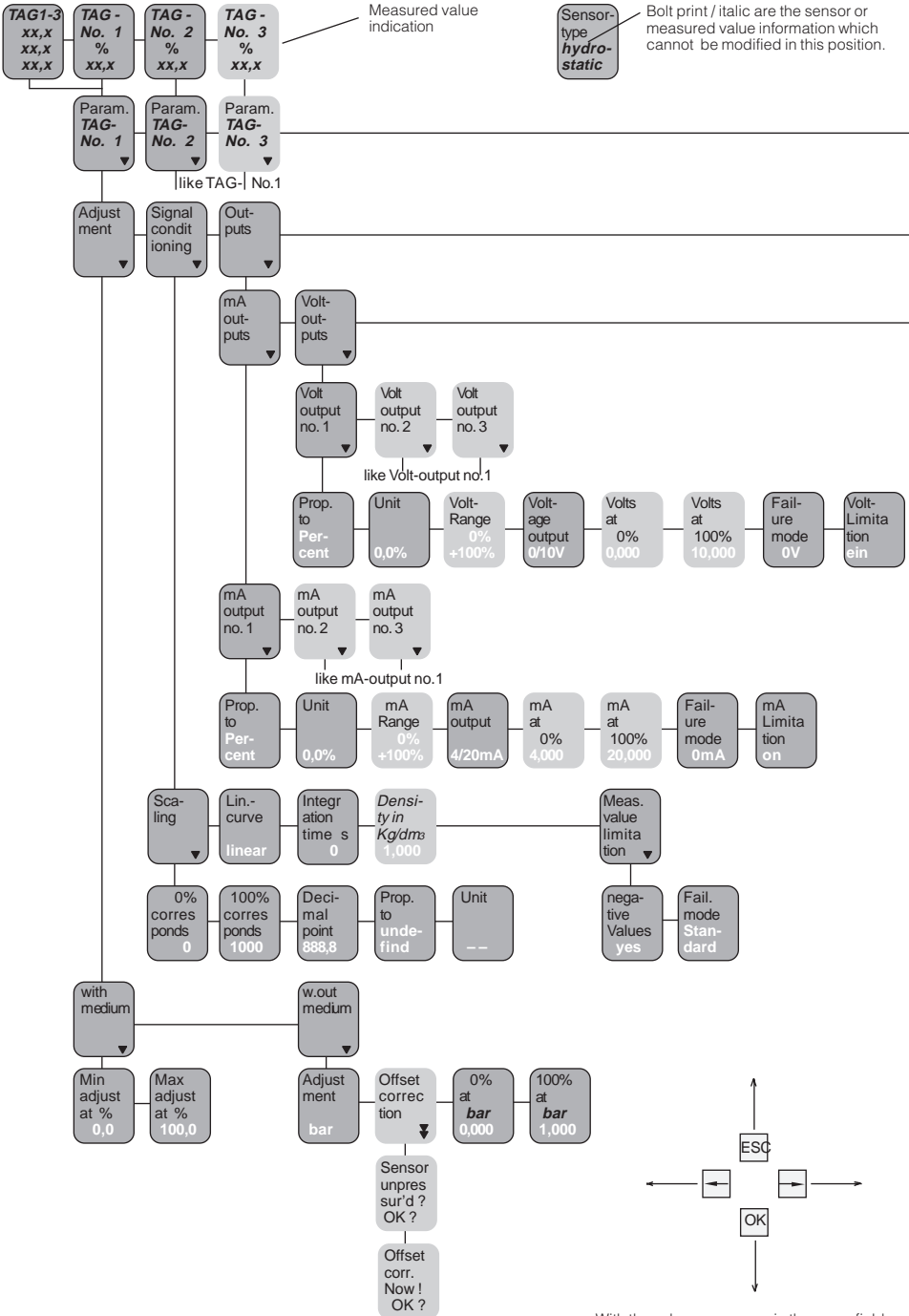


Menu plan

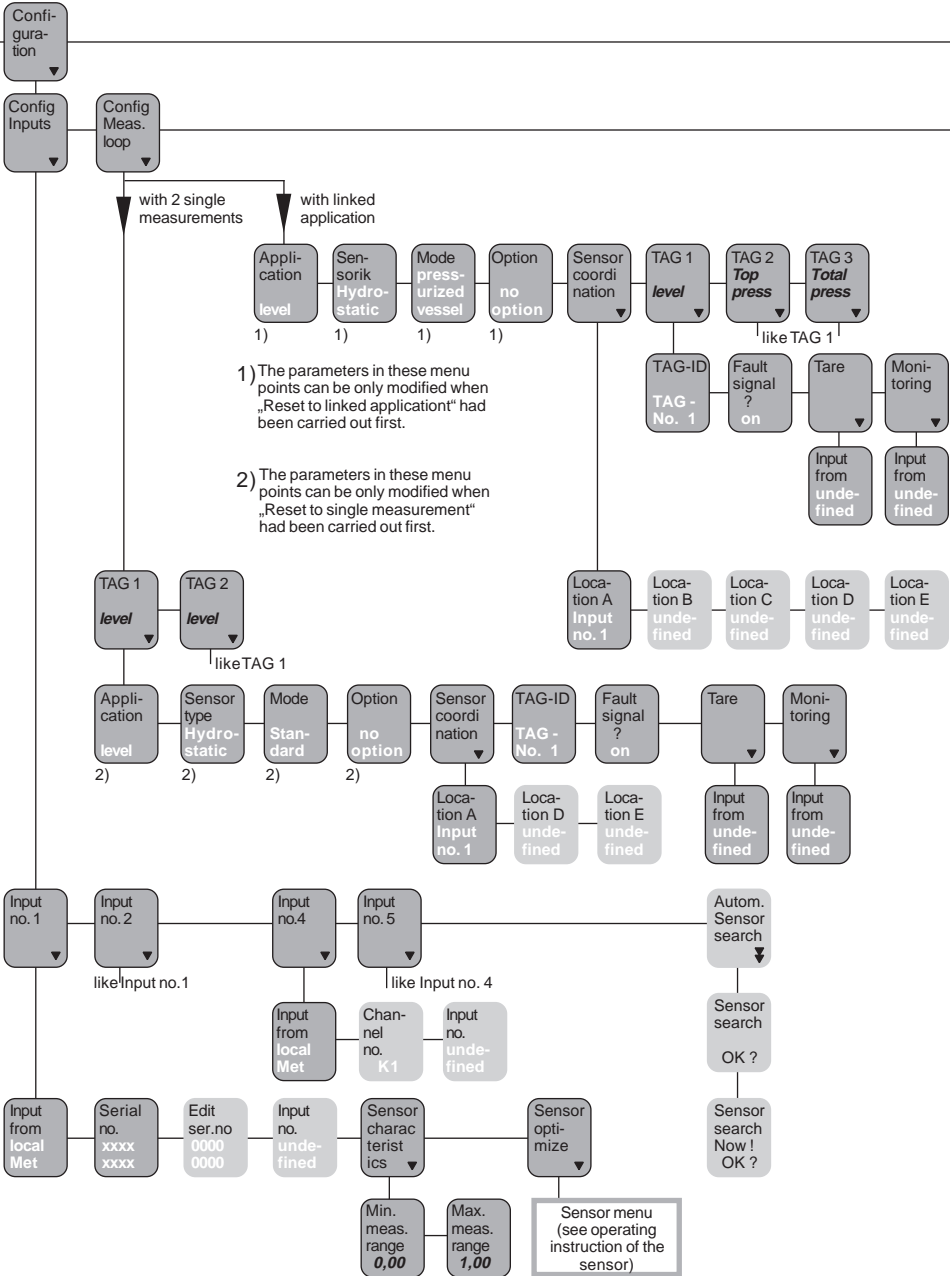
VEGAMET 515 V

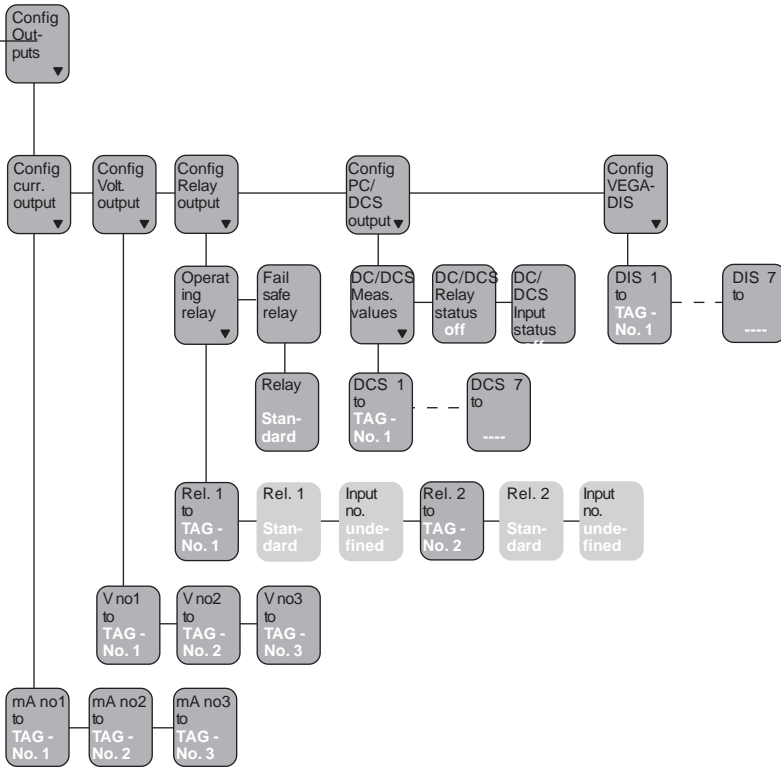




With these keys you move in the menu field

previous page
←

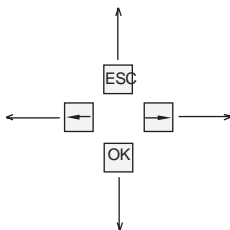




Sensor-type *hydrostatic* Bolt print / italic are the sensor or measured value information which cannot be modified in this position.

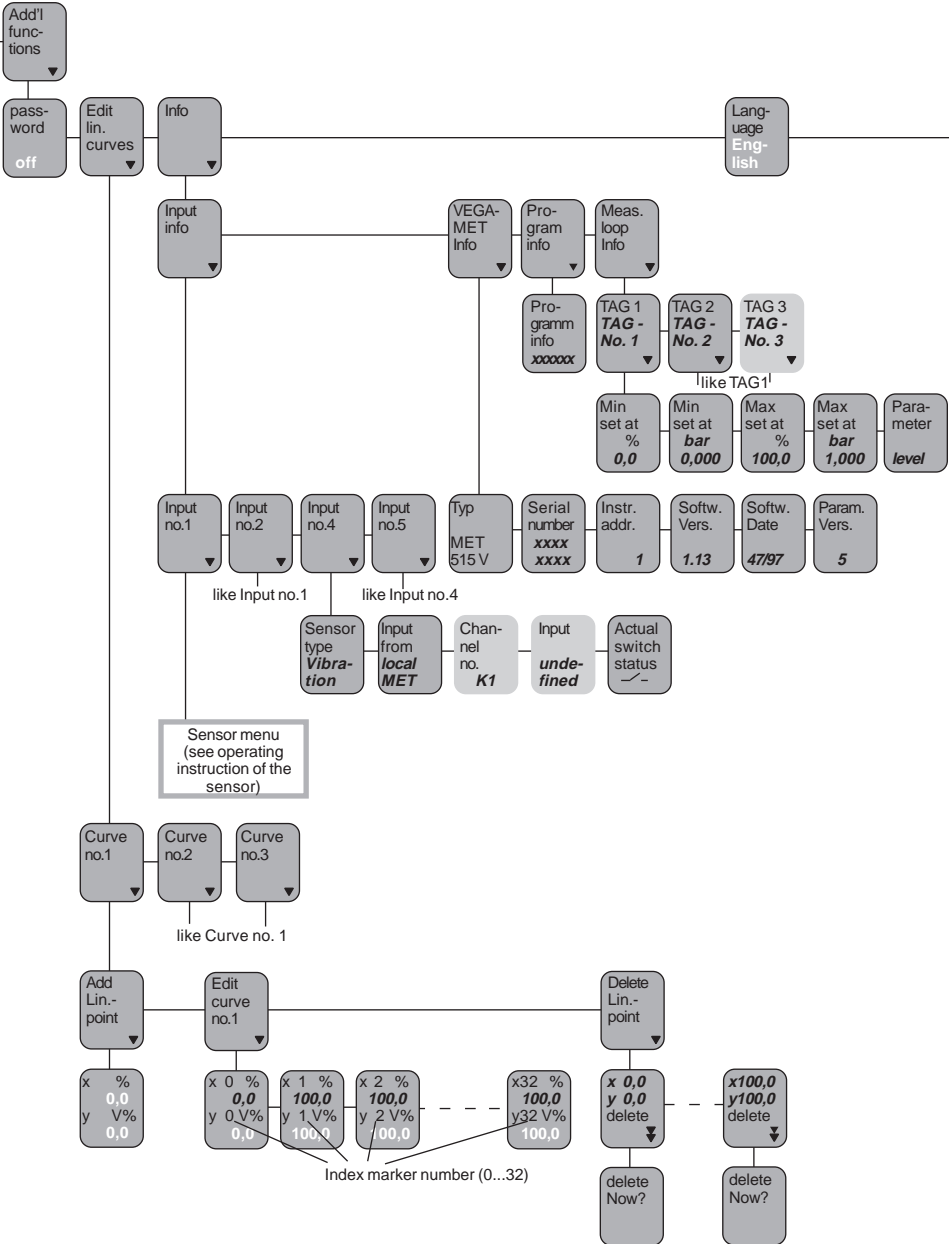
Language English In white letters you see the parameters which can be modified with the + or - key and which can be saved with the OK-key.

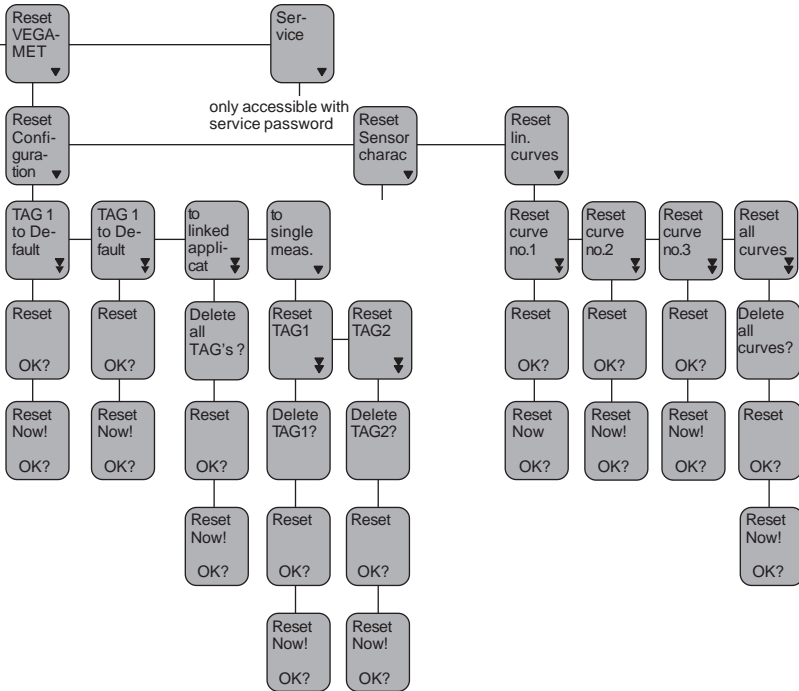
mA at 100% 20,000 Light grey menu points are only displayed if necessary (dependent on the adjustments in other menus).



With these keys you move in the menu field

previous page



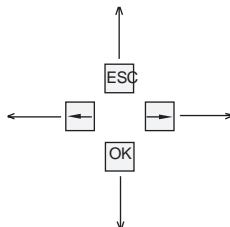


Sensor-type
hydro-static

Bolt print / italic are the sensor or measured value information which cannot be modified in this position.

Language
English

In white letters you see the parameters which can be modified with the + or - key and which can be saved with the OK-key.



With these keys you move in the menu field

mA
at 100%
20,000

Light grey menu points are only displayed if necessary (dependent on the adjustments in other menus).

VEGA

VEGA Grieshaber KG
Am Hohenstein 113
D-77761 Schiltach
Phone (0 78 36) 50 - 0
Fax (0 78 36) 50 - 201
e-mail vega@vega-g.de

