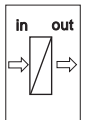
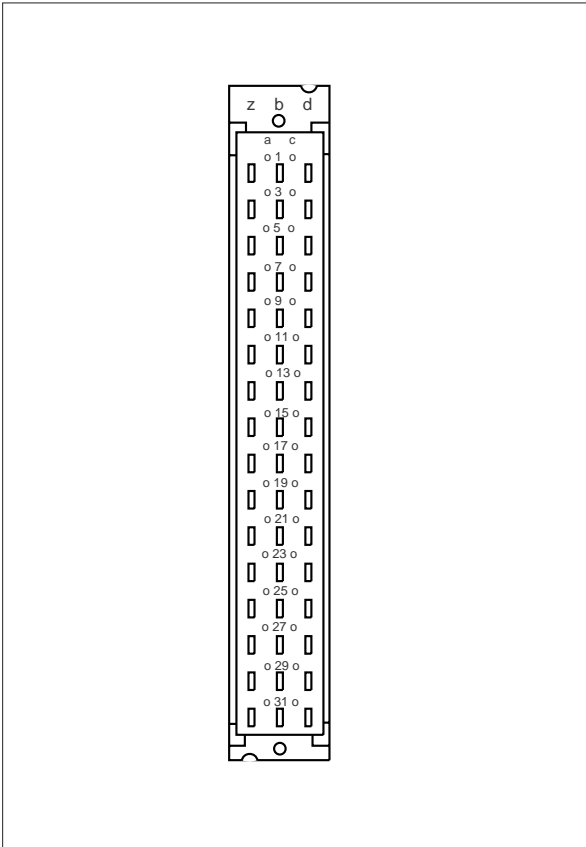


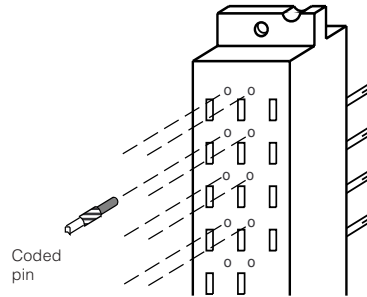
# Operating Instruction

## Module-33/Ex-33



### Coding of the module

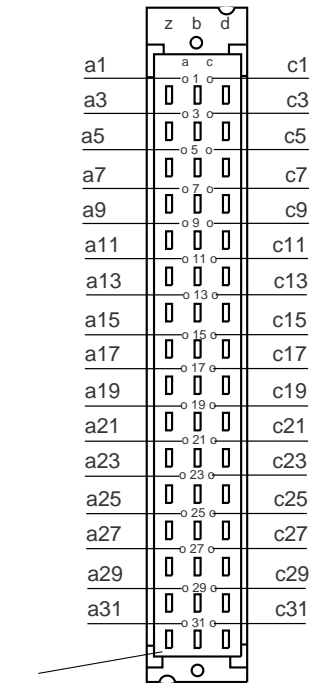
The multipoint connector can be provided with coded pins to avoid interchanging of the different instruments in the carrier. Coded pins are attached to each module. Equip the multipoint connector with these coded pins acc. to the table and figure on this page. The multiple plug of VEGA-instruments has appropriate holes (mechanical coding).



#### Module for Ex-instruments:

The multipoint connector **must** be provided with three coded pins. The coded pin for the Ex coding (position c23) avoids that not-Ex-instruments are plugged into an Ex-module.

Instrument group	Instrument	Instrument coding	Ex-coding
LOG 571	CPU	a1 / c3	-
	EV	a3 / c3	-
	AA	a5 / c3	-
	AR	a7 / c3	-
	AT	a9 / c3	-
	EA	a11 / c3	-
MET	AD	a13 / c3	-
	513 Ex	a1 / c5	c23
	TRENN 544 EX	a1/c5	c23
	514 EX	a3 / c5	c23
	515 Ex	a5 / c5	c23
	514 DEx	a5/c5	c23
	514 V	a7/c5	-
	515 V	a7 / c5	-
TOR	514 VD	a7/c5	-
	521 Ex	a9 / c7	c23
	522 Ex	a11 / c7	c23
	523 Ex	a13 / c7	c23
	527 Ex	a15 / c7	c23
	536 Ex	a17 / c7	c23
	537 Ex	a19 / c7	c23
	532 Ex	a21 / c7	c23
SEL	543-547	a1 / c9	-
Others	TRENN 547 VEx	a23 / c11	c23
	TRENN 548 VEx	a25 / c11	c23
	COM 557	a27 / c11	-

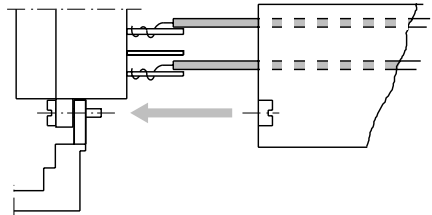


## Connection instructions for Ex-applications

### Mounting in carriers and housings

When a VEGA-instrument with Ex-approval is mounted in a carrier or a single housing, a module Ex-33 of VEGA must be used. Keep a distance of at least 2 TE (10,16 mm) to module cards of foreign manufacturers. The modules or instruments must be generally installed outside the hazardous area or further Ex-protective measures must be taken.

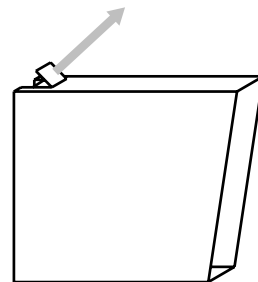
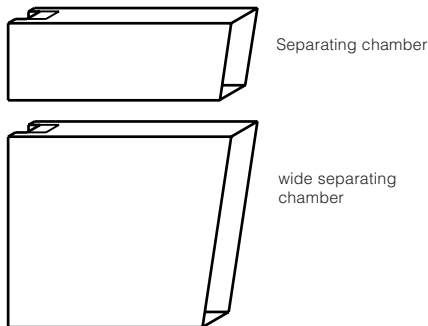
Loop the lines of the intrinsically safe circuit through the separating chamber and connect to the appropriate position of the multipoint connector.



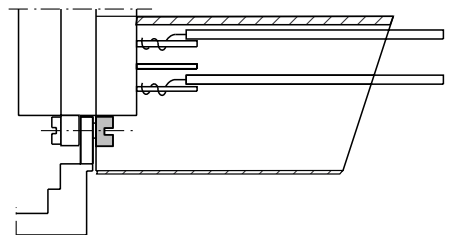
### Ex-separating chamber

An Ex-separating chamber (with modules for the installation of VEGATRENN 547 VEx and 548 VEx) the wide separating chamber must be used) must be mounted to the connections of the Ex-module to guarantee sufficient air and creeping distances. Proceed as follows:

When using a multipoint connector with screw connection, the upper marked section on the separating chamber of module Ex-33 E must be broken off first.



Shift the separating chamber up to the multipoint connector and fasten with the integral nut to the protruding fixing screw of the multipoint connector.



# VEGA

**VEGA Grieshaber KG**

**Am Hohenstein 113**

**D-77761 Schiltach**

**Phone (0 78 36) 50 - 0**

**Fax (0 78 36) 50 - 201**

**Fax (0 78 36) 50 - 203**

